

# Section 1: Your first connection to Cliniciel

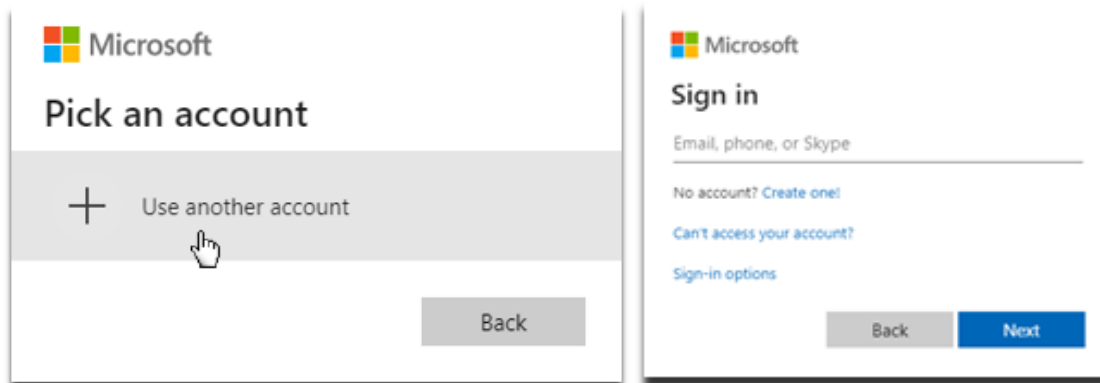
## Step 1: Connection to your “@cloud.cliniciel.com” account

- Please go to the Cliniciel website and click on “Se connecter”:

<https://www.cliniciel.com/>

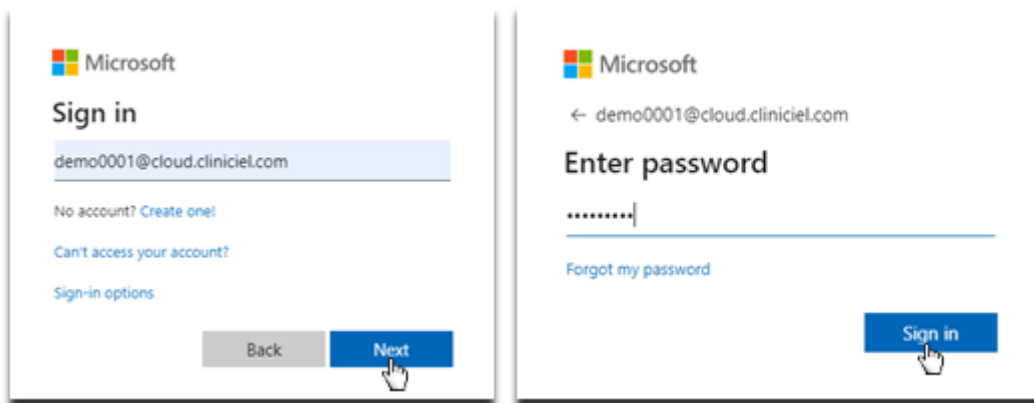


- You must click on “Use another account”:

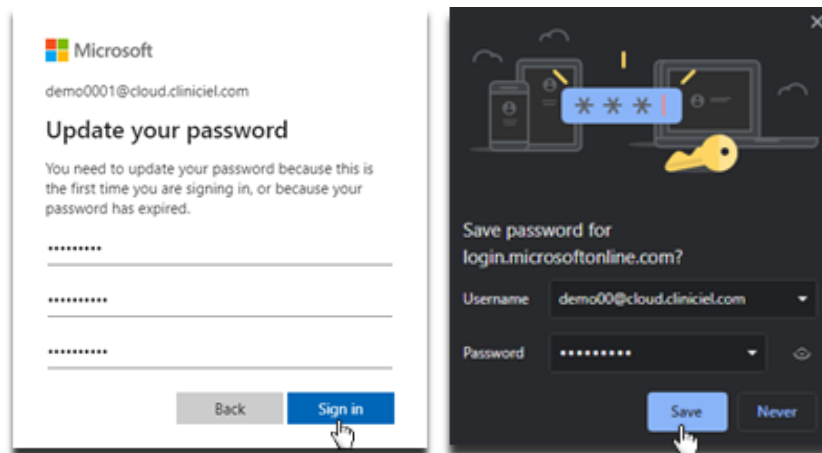


If you do not see one of those two windows, simply disconnect yourself from your personal account by clicking on your username in the top right corner.

- You must now enter the “@cloud.cliniciel.com” email address and the password that has been provided to you by EFS Health Solutions:

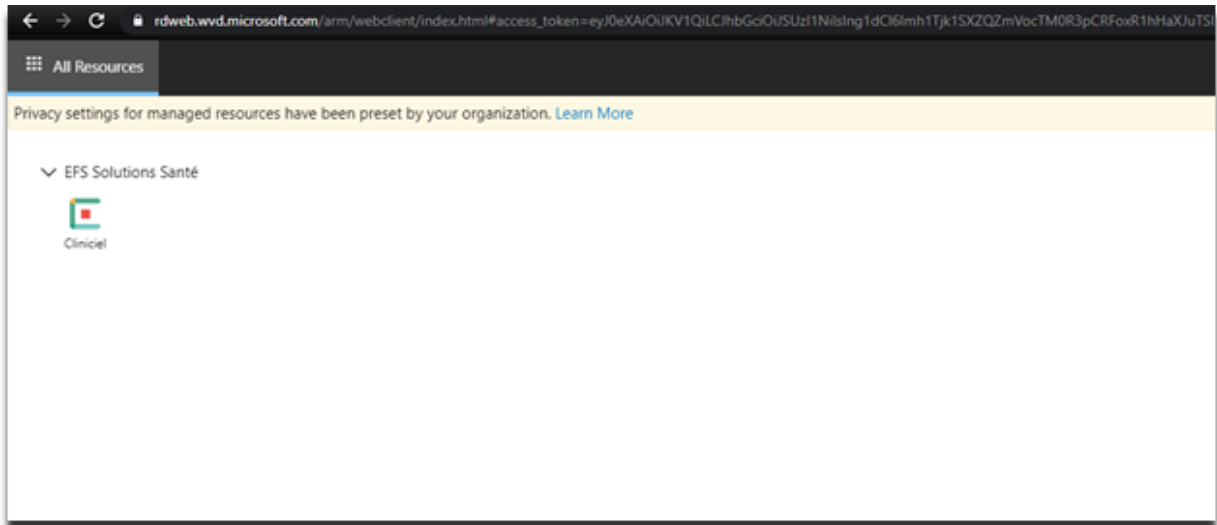


- Because this is the first time you are signing in with this account, you need to create a new password:



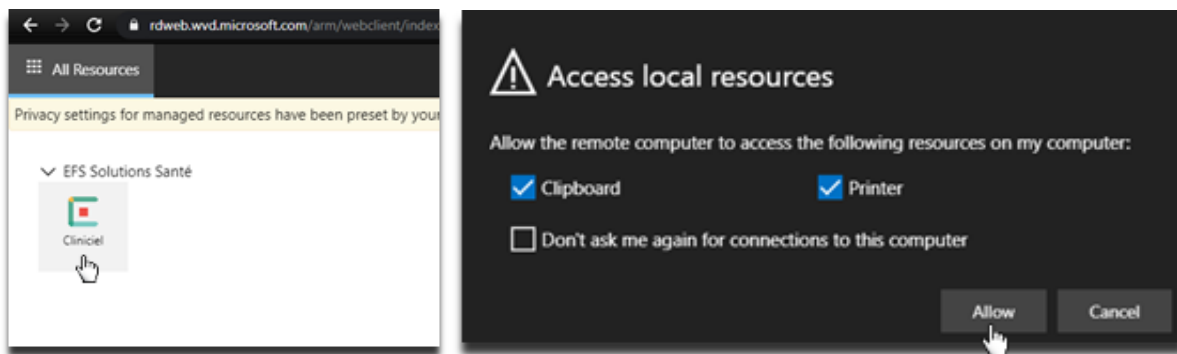
\* To speed up the login process, you can save your password. **Warning, your account will be available for everyone using your computer!**

- You should now be redirected to this window if you have successfully completed the first step:



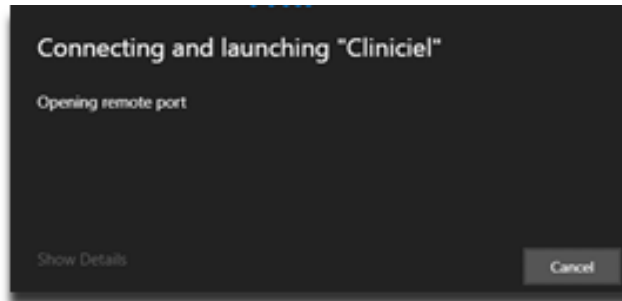
## Step 2: Starting Cliniciel

- You must now click on the Cliniciel logo and grant access to the remote computer:



You can check the last checkbox “Don’t ask me again [...]” if you do not want to see this window every time you launch Cliniciel.

- Please wait a few moments while Cliniciel is launching:

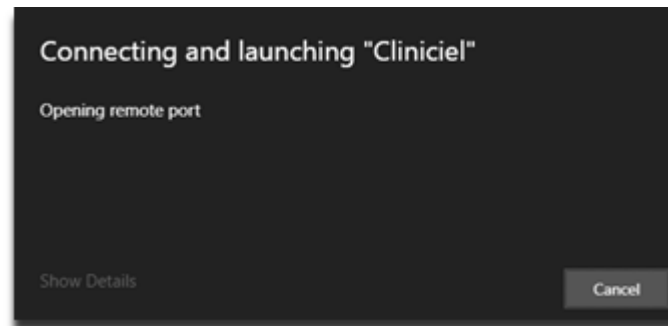


- After the loading, you may now enter your email address and your password set during the first step:

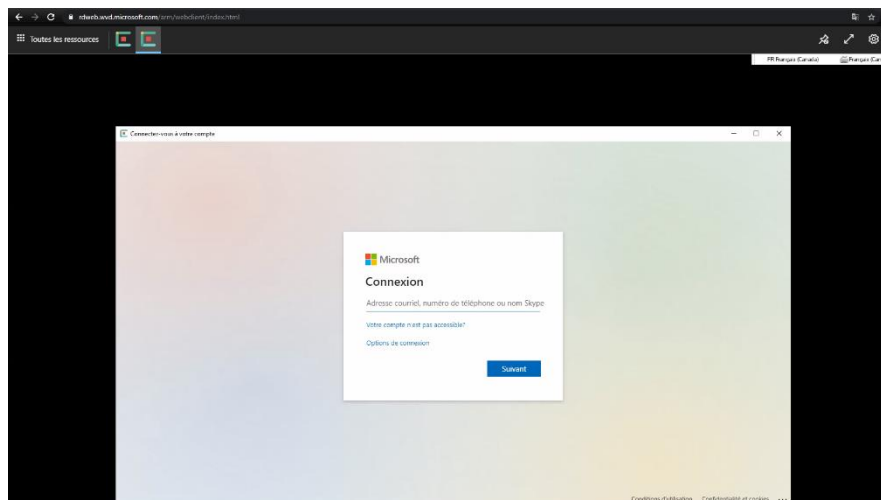
A dark-themed login form titled "Enter your credentials". It has two input fields: "User name" containing "demo00@cloud.cliniciel.com" and "Password" masked with asterisks. At the bottom are "Submit" and "Cancel" buttons. A mouse cursor is pointing at the "Submit" button.A dark-themed dialog box titled "Save password?". It features a key icon and a "Save password?" question. Below are "Username" and "Password" fields, both containing the same values as the previous form. At the bottom are "Save" and "Never" buttons. A mouse cursor is pointing at the "Save" button.

\* To speed up the login process, you can save your password. **Warning, your account will be available for everyone using your computer!**

- Please wait a few moments again while you are launching Cliniciel:



- After the loading, you should see this window if you have successfully completed the step 2:



If you do not see this window, please try again the step 2.

### Step 3: Register to Cliniciel

- In the Cliniciel window, you must now enter again your email address and your password:

The first screenshot shows the Microsoft sign-in page. It features the Microsoft logo at the top left, followed by the text 'Sign in'. Below this is a text input field containing the email address 'demo0001@cloud.cliniciel.com'. Underneath the field are links for 'Can't access your account?' and 'Sign-in options'. At the bottom, there are two buttons: a grey 'Back' button and a blue 'Next' button with a mouse cursor hovering over it.

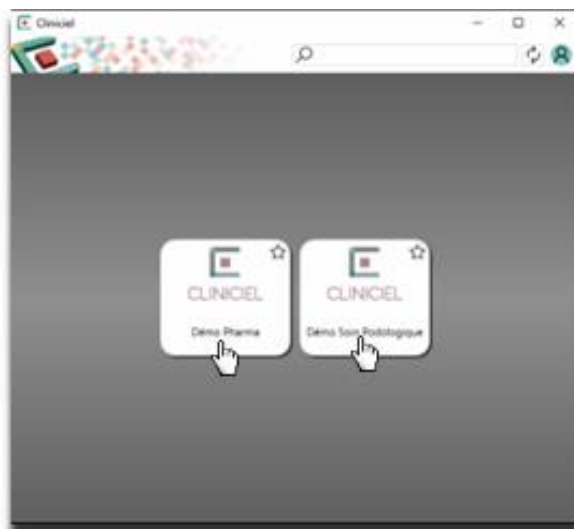
The second screenshot shows the 'Enter password' page. It features the Microsoft logo at the top left, followed by the text 'Enter password'. Below this is a text input field containing a masked password '.....'. Underneath the field is a link for 'Forgot my password'. At the bottom right, there is a blue 'Sign in' button with a mouse cursor hovering over it.

- You must now fill all the required informations and accept the terms of service and the privacy policy:

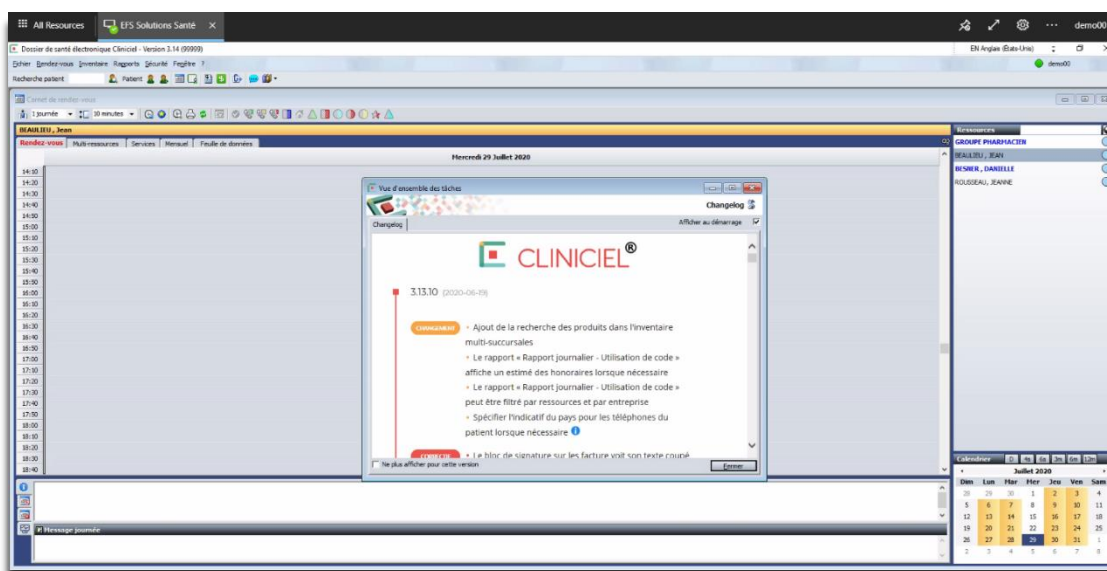
The 'Register' page contains several input fields: a name field with 'Demo', a phone field with '001', an email field with 'personal@address.com', and two PIN fields, each with four asterisks. Below the PIN fields, there are two checkboxes: the first is checked and labeled 'I accept the Terms of Service and Privacy Policy', and the second is unchecked and labeled 'I'd like to receive informations about updates and new products of EFS Health Solutions'. At the bottom of the page is a large teal button labeled 'Complete registration' with a mouse cursor hovering over it.

## Step 4: Launching your Cliniciel

- You are now at the last step! You simply need to click on your Cliniciel to launch it:



Congratulations! You have just completed with success the 4 steps to connect to your Cliniciel!



## Section 2: Your subsequent connections to your Cliniciel

---

This next section is dedicated to show you how fast you can connect to your Cliniciel, assuming you have saved your account passwords during your first connection.

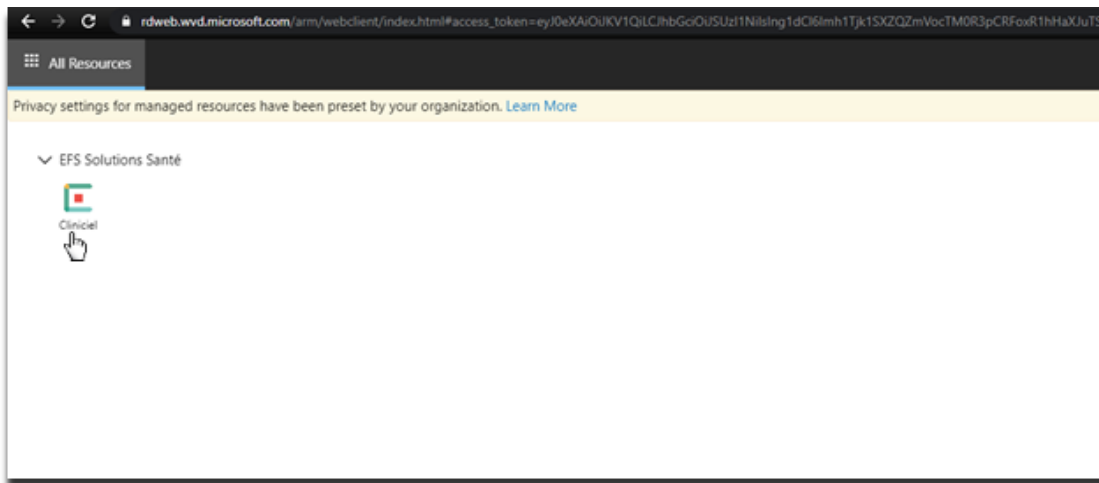
- Please go to the Cliniciel website and click on “Se connecter”:

<http://www.efssolutionsante.com/>





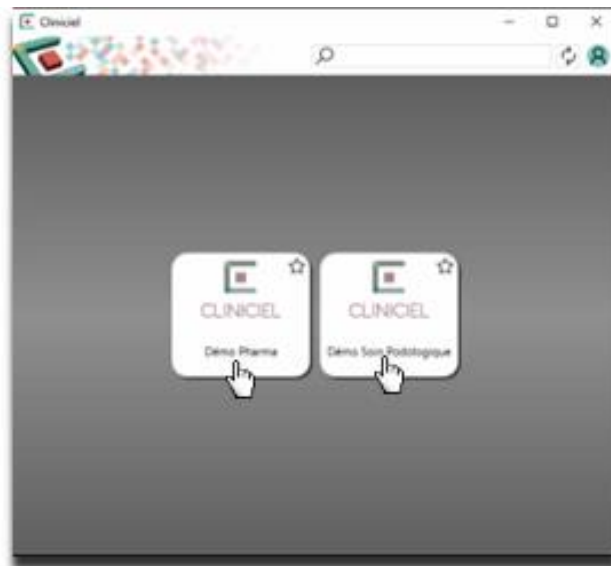
- Being already connected to your account, click on the Cliniciel logo:



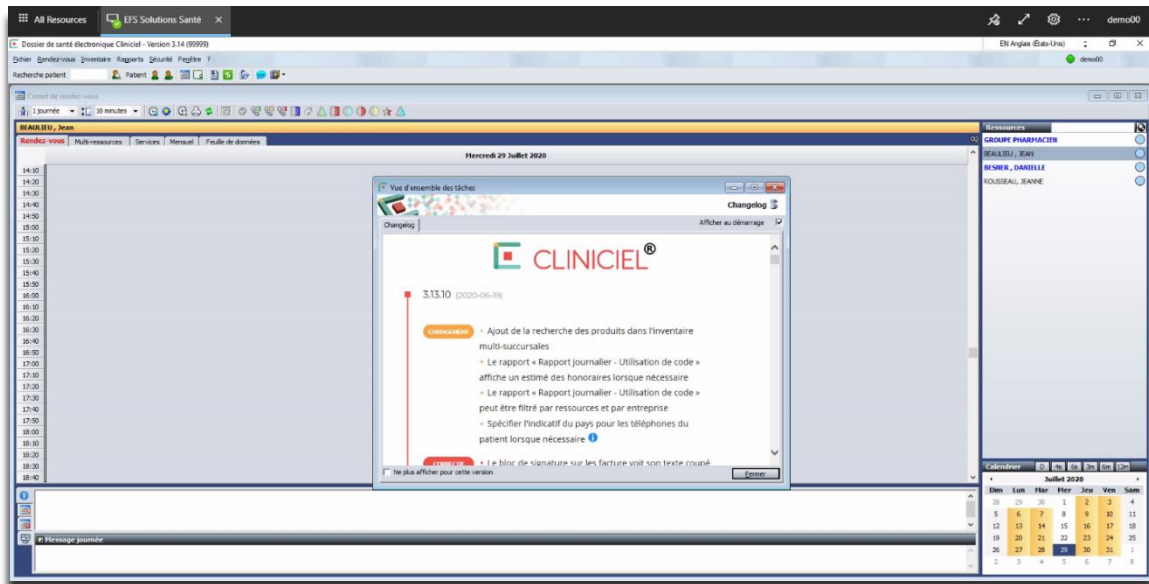
- You simply need to click on “Submit”, your credentials being already saved:

A screenshot of a login form titled 'Enter your credentials'. The form has a dark background. It contains two input fields: 'User name' with the value 'demo00@cloud.cliniciel.com' and 'Password' with masked characters '\*\*\*\*\*'. At the bottom right, there are two buttons: a blue 'Submit' button and a grey 'Cancel' button. A mouse cursor is pointing at the 'Submit' button.

- After the loading, you are already at the step to click on your Cliniciel to launch it:



And there you go! You are already back in your Cliniciel!



It is possible that an extra step exists after clicking on your Cliniciel:

Your username will already be filled. You will only need to enter your PIN from step 4 of the first section and click on “Connexion”:

